

GE Healthcare

# Voluson S6



Extraordinary vision  
*Signature Series*



# Enhancing your productivity.

Giving patients timely access to quality ultrasound is critical in women's healthcare. Busy practices and departments need dedicated technology with the flexibility, ease of use, speed and reliability to manage a comprehensive range of routine obstetric and gynecological exams.

## **Voluson S6** – *Signature Series*

Now, Voluson technology is available in a new family of budget friendly systems, the Signature Series, which enables more clinicians to bring the benefits of this remarkable technology to their patients.

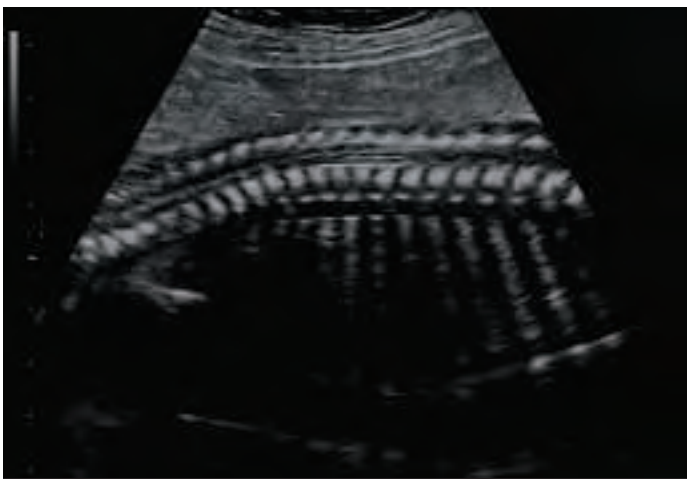


An innovative yet budget-friendly system, Voluson S6 offers an excellent mix of capabilities for effective and efficient care, including:

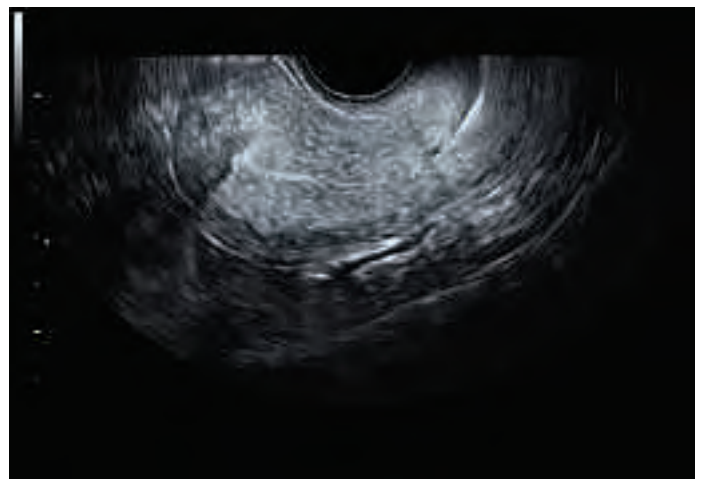
- Extraordinary 2D image quality – the foundation of Voluson ultrasound – is the result of system intelligence, Voluson software and probe technology, and requires minimal user interaction for excellent optimization.
- Excellent volume imaging capabilities based on outstanding 2D imaging and enabled by user-friendly workflow.
- Automation advances that help improve the speed, quality and consistency of OB/GYN studies, while also enabling practices to expand in new clinical areas.
- Easy-to-learn workflow tools that help busy practices maintain high quality while helping to reduce the time required to conduct, analyze, and report on exams.
- Ergonomic design that helps simplify how users interact with the system and promotes optimal comfort while scanning.

The Voluson S6 achieves the price-performance target in ultrasound, with hard-working capabilities that fit your practice, your patient base, and your budget.





**SRI (Speckle Reduction Imaging)** helps reduce intrinsic artifacts to improve visualization and contrast resolution.



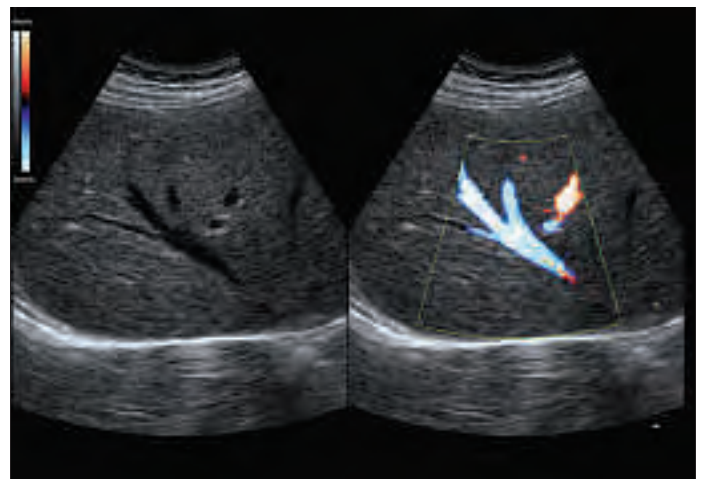
**CrossXBeam<sup>CR1</sup>** helps enhance tissue interfaces and border differentiation, for boundary definition.

# Expect more from your 2D images

For all the advances in ultrasound, 2D imaging is still the backbone of Women's Health exams.



**HD-Flow™** uses bi-directional power Doppler to help improve sensitivity and accuracy for detecting blood flow.



**Dual-view** allows simultaneous visualization of anatomy and blood flow.

Helping you consistently achieve excellent images

## Gain confidence in volume ultrasound

Voluson technology is known for its 3D/4D imaging capabilities, and the Voluson S6 is an excellent system for clinicians interested in bringing this remarkable tool into their practices.

**The system also provides exceptional user support with tools like:**

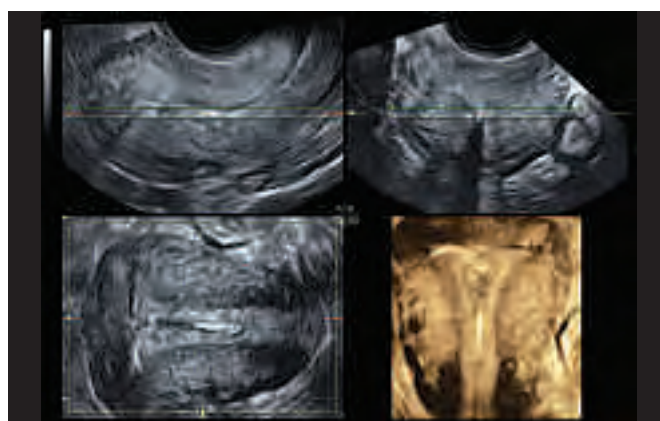
- **SonoRender Start** – enables the user to quickly optimize volume rendering with the touch of a single button.
- **VCI (Volume Contrast Imaging)** – helps deliver a high contrast resolution of static and real-time 3D volume in all planes, to help increase image clarity in early second-trimester studies.
- **Beta View** – allows the user to steer the scan plane to any oblique direction, which can result in less manipulation of the probe and added patient comfort.



SonoRender Start



Fetal spine rendering - max render mode

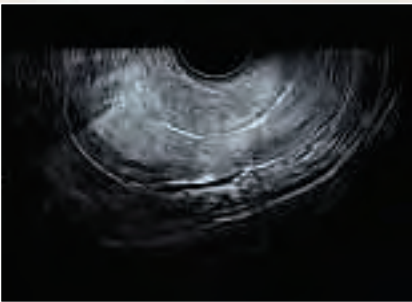


GYN - multiplanar rendering

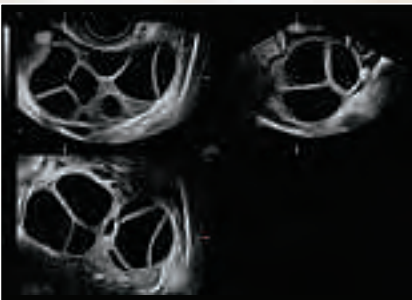


## High performance probes

Probes are critical to both the quality and speed of exams. The Voluson S6 supports a wide range of advanced 2D and 3D probes whose innovative technology delivers high quality images with exceptional clarity. System intelligence and probe technology combine to produce outstanding image quality with minimal user interaction – just place the probe and scan with confidence.



Wide sector utilizes proprietary beam-steering technology to help maximize field of view



Stimulated ovary obtained with a RIC5-9W-RS endovaginal probe



# The simplicity and ease of harmonious design

The Voluson S6 system is designed so that hardware, software, and probes work together to enable easy imaging. You can expect fewer keystrokes, excellent responsiveness, and a high degree of automation, enabling you to concentrate on the patient rather than system operation.

## Streamline obstetric and gynecology exams with automation

You will find a wide range of automated tools that help streamline exams and help ensure reproducibility of results.

**SonoNT™** (Sonography-based Nuchal Translucency) an easy-to-use, semi-automated tool to provide quantifiable NT measurements and image guidance, enhancing the accuracy and reproducibility of these critical metrics.

**SonoAVC™ follicle** (Sonography-based Automated Volume Count *follicle*) automatically calculates the number and volume of hypoechoic structures to speed follicular assessments and enhance exam quality.

**SonoVCADlabor** automatically documents the labor procedure to help users evaluate second-stage labor progression.

## Tools that help users work smarter

The Voluson S6 system provides easy-to-use tools that help busy departments and practices improve workflow while helping ensure exam consistency. Among them:

- **Scan Assistant** – helps automate many repetitive actions that occur during an exam, helping to improve quality assurance, increase exam consistency, and boost productivity.
- **Raw Data.** The ability to capture raw data allows a virtual rescan of the patient at any time after the study, on the system or at a remote workstation. This “second look” can help increase productivity and improve diagnostic confidence.

## Streamlined archiving and reporting

- **Streamlined archiving and reporting** – The Voluson S6 is DICOM™ compliant and is compatible with many electronic medical record (EMR) systems. This connectivity allows you to organize and archive patient data efficiently and helps you stay compliant with growing patient data regulations.

- **ViewPoint reporting and image management** provides customizable templates for 1st trimester, 2nd/3rd trimester, and gynecology exams, allowing you to create clearly structured reports, including images, and charts. Go paperless with digital measurement transfer, image management, and record storage, helping your practice save time and cost.

The image management module features the integrated 4D View program, allowing you to utilize Voluson's automated technologies like SonoVCAD<sup>heart</sup> and SonoNT within ViewPoint – an excellent addition to your Voluson.





+ 19-inch, flat-screen LCD monitor. The large, high-resolution monitor helps increase visibility and reduce eye fatigue. The monitor moves independently of the console.

+ Superb ergonomics. The Voluson Signature Series follows the Society of Diagnostic Medical Sonographers (SDMS) ergonomic guidelines.

+ Scan in comfort. Console height adjusts and keyboard rotates to user preference.

+ Simplified workflow. With fewer controls, exams can be completed with a reduced number of keystrokes and manipulations.



+ Compact and mobile. The sleek, lightweight console is easy to transport. Its small footprint slides under beds and makes optimal use of small spaces.

+ Probe protection. The thoughtful design of the probe holder helps protect delicate transducers while positioning them for optimal convenience.

+ Wireless connectivity helps user manage patient information, report data, and send images easily.

+ Integrated peripherals reduce clutter and easy-to-access USB ports expand functionality.



Voluson helps provide exceptional user comfort and productivity.

# At your service – throughout the relationship

With the Voluson S6 system, you can count on responsive service and support from GE Healthcare. We know that a long-term relationship depends on providing you with technologies and programs that truly meet your needs for equipment maintenance and service, probe protection and financing.

- + Online remote support.** InSite™ Remote Diagnostics helps you maintain high uptime by seamlessly integrating your ultrasound system with the GE digital services network. When you report a problem, GE engineers begin evaluating your system online within minutes via a secure connection. Often they can identify and resolve technical issues remotely to maximize equipment availability.
- + Financing options.** GE offers an array of financing options through GE Capital, Healthcare Financial Services (HFS). Whether you are looking to lease or own, HFS has a wide range of lease and loan programs which can be tailored to fit your individual cashflow needs.
- + Responsive on-site service.** GE Healthcare field engineers bring exceptional technical skills, advanced tools for performance optimization and personal dedication to supporting your equipment. We will provide preventive maintenance and service as needed to help ensure optimal system performance day after day.
- + Probe protection.** Our probes programs offers peace of mind that your probes are protected and can be exchanged in the event including specified probes – in one cost-effective package.



## Extraordinary vision for the environment. Everyday savings for you.

Voluson ultrasound systems are among the most energy efficient in the industry. That means with every image you will save time, reduce costs, and preserve the environment.

- Voluson Signature Series systems consume fewer kWh of electricity per year for the same number of scans\*, a real savings for you.
- The Voluson Signature Series imaging platform and high-resolution probes work together to help reduce scan time†, creating the potential to scan more patients per day.
- By enabling digital archiving, the DICOM-based Voluson Signature Series can help most hospitals reduce ultrasound paper usage per machine\*\*, taking cost out of your budget.

It's part of the GE commitment to invest in innovative solutions to environmental challenges while empowering you with advanced tools for healthcare delivery.

\* Compared to prior GE cart-based ultrasound technology

\*\*Compared to analog ultrasound technology

**+ Education and training.** GE offers courses at either a GE education facility, or at an on-site location to suit your practice needs. Instruction includes in-depth technology review of image optimization and customization, 3D and 4D techniques, volume manipulations and advanced 3D/4D tools and applications. Highlights include technical and clinical lectures as well as focused hands-on scanning under the supervision of product experts.

**+ VolusonClub** is an online community of over 10,000 Voluson users that can help you experience the full diagnostic power of your Voluson ultrasound. Inside VolusonClub you will have access to a collection of tools and resources only available to members.

These materials can help you enhance your knowledge of system operation, and learn techniques to help you improve your productivity. Interact with other Voluson users, receive communications, and access a wide library of Voluson specific materials.

Joining is easy, visit [www.volusonclub.net](http://www.volusonclub.net).

©2011 General Electric Company – All rights reserved.

General Electric Company reserves the right to make changes in specifications and features shown herein, or discontinue the product described at any time without notice or obligation. Contact your GE Representative for the most current information.

GE, GE Monogram, Voluson, CrossXBeam<sup>SM</sup>, HD-Flow, SonoVCAD, SonoAVC, SonoNT and InSite are trademarks of General Electric Company.

DICOM is a registered mark of the National Electrical Manufacturers Association.

GE Medical Systems Ultrasound & Primary Care Diagnostics, LLC, a General Electric company, doing business as GE Healthcare.

## About GE Healthcare

GE Healthcare provides transformational medical technologies and services that are shaping a new age of patient care. Our broad expertise in medical imaging and information technologies, medical diagnostics, patient monitoring systems, drug discovery, biopharmaceutical manufacturing technologies, performance improvement and performance solutions services help our customers to deliver better care to more people around the world at a lower cost. In addition, we partner with healthcare leaders, striving to leverage the global policy change necessary to implement a successful shift to sustainable healthcare systems.

Our “healthymagination” vision for the future invites the world to join us on our journey as we continuously develop innovations focused on reducing costs, increasing access and improving quality around the world. Headquartered in the United Kingdom, GE Healthcare is a unit of General Electric Company (NYSE: GE). Worldwide, GE Healthcare employees are committed to serving healthcare professionals and their patients in more than 100 countries. For more information about GE Healthcare, visit our website at [www.voluson.gehealthcare.com](http://www.voluson.gehealthcare.com).

### UNITED KINGDOM

GE Medical Systems Ultrasound  
71 Great North Road  
Hatfield  
Hertfordshire  
AL9 5EN  
T 44 1707 263570  
F 44 1707 260065

### EUROPE

GE Ultraschall  
Deutschland GmbH  
Beethovenstr. 239,  
42655 Solingen  
Germany  
T 49 212-28 02-0  
F 49 212-28 02 28

### AMERICAS

GE Healthcare  
9900 Innovation Drive  
Wauwatosa,  
WI 53226  
U.S.A.  
T 1 888 202 5582

### ASIA

GE Healthcare  
Clinical Systems ASIA  
1105-1108 Maxdo Center  
8 XingYi Road,  
Shanghai, 200336  
T 86 21 5257 4640  
F 86 21 5208 0582



GE imagination at work

ecomagination<sup>SM</sup>

healthymagination